

The Weekly Spark

Leaman Junior High School

Mike Semmler, Principal

January 9, 2021

Issue 15



Counselor's Corner

8th Graders!!

**FINAL DAY TO SUBMIT
ENDORSEMENTS – Jan 12th**

See the attached Flyer
Contact Ms. Session with any
questions! 8th grade ONLY

Reminders

January 12

8th Grade Endorsement
Deadline

January 18

Student/Staff Holiday

January 25

Learning Commitment
Form Opens

February 5th

Learning Commitment
Form Closes

February 19

End of 4th six Weeks
Early Dismissal 12:15p

Notices & Information

Interested in Chess Club?
See Coach Walters for info
twalters@lcsd.org

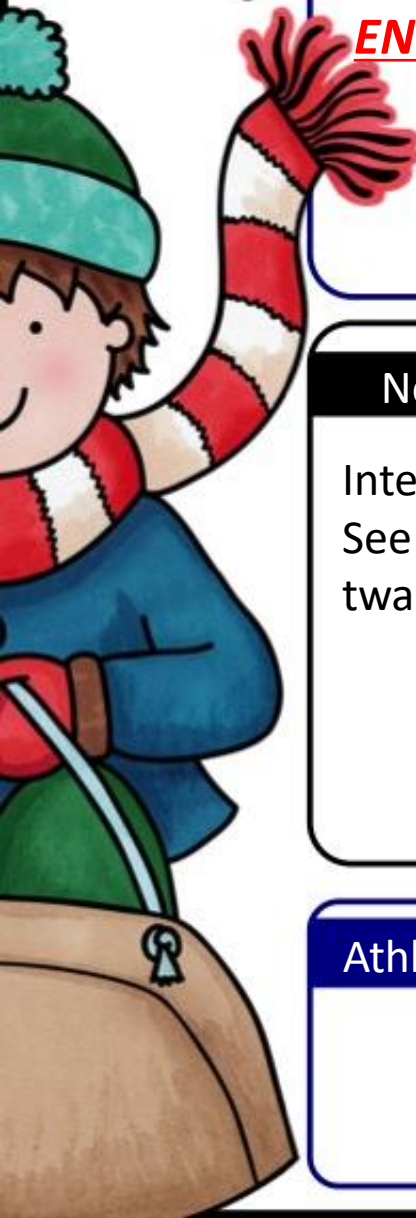


Athletics

**Basketball Tryouts
Boys & Girls Schedules**

Will be posted on the Leaman Athletics website

[Leaman Athletics](http://www.lcsd.org/campuses/leamanjh/athletics) - www.lcsd.org/campuses/leamanjh/athletics

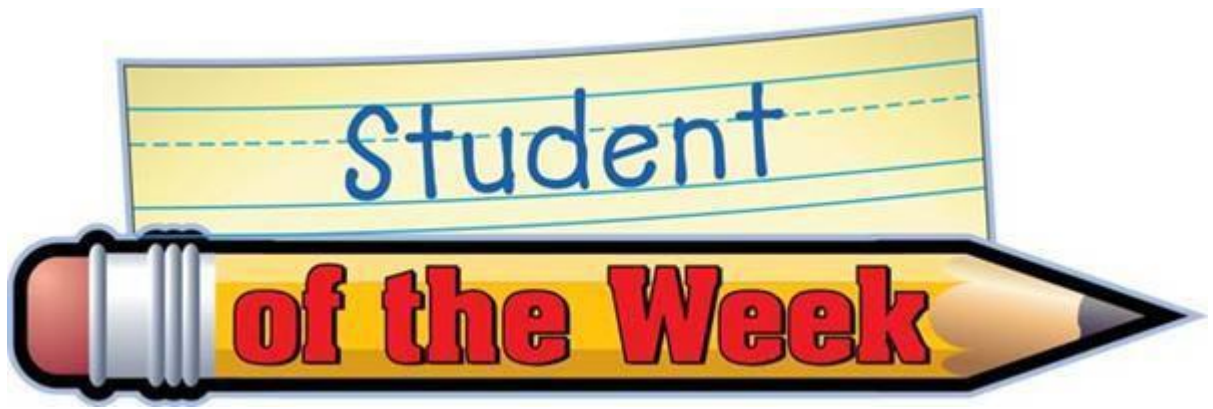


New

Information

This Week

NEW!



7th *Grade*

Ian Nkwelle-Njume
Nominated by: Mr. Johnson



8th *Grade*

Brian Hooven
Nominated by: Ms. Del Pinto



Endorsement Selection for 8th graders

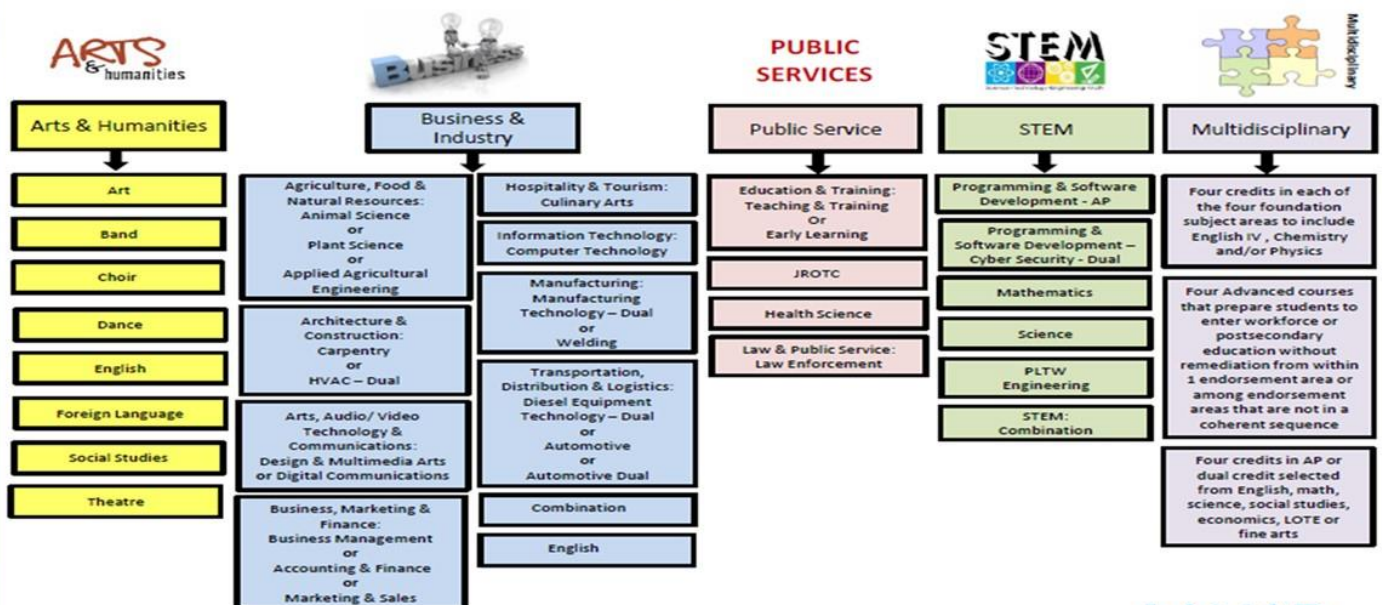
All 8th graders who have not chosen a high school endorsement must do so by **January 12th**. The Endorsement and Pathway must be chosen by this date in order for students to have correct information on their high school career plan.

You must email your 8th grade counselor, Latoya Session (lsession@lcisd.org) with your chosen endorsement and the specific pathway, for example, Public Service– Health Science.

FOR MORE INFORMATION ABOUT
ENDORSEMENTS, PATHWAYS, HIGH SCHOOL,
AND MORE, PLEASE CLICK

<https://www.lcisd.org/students-parents/lcisd-endorsement-pathways>

LCISD Programs of Study by Endorsement 2021-2022



LEAMAN JUNIOR HIGH



TEA Interim Assessments

- Math, Reading, Science (8th only), and Social Studies (8th only) will be giving TEA Interim Assessments this spring starting in February.
 - Face to face students will test during the class period
 - Virtual students will test at home
 - Dates TBA by your student's teachers (check [Canvas](#) calendars)
 - The Math and Reading Assessments are two parts, and may take up to two days
- These assessments benchmark student progress at key points in the year.
- These assessments must be done on a laptop or desktop computer – ***phones or iPads cannot be used.***
- Students will access the TEA Interim Assessment App through [Classlink](#).
 - Log in information for each assessment can be found on [Skyward Family Access](#) using these [directions](#).
 - Directions for accessing the Interim Assessment App in Classlink can be found [HERE](#) or in your teacher's [Canvas](#) course.
 - **Algebra students will take the Algebra Interim Assessment**
 - **7th Grade PAP Math Students will take the 8th Math Interim Assessment**
- For more information about testing in LCISD visit the [Students & Parents](#) site.

Progress Monitoring Assessments

- Students will take LCISD Progress Monitoring Assessments (PMAs) throughout the year
 - Jan. 7th/8th Science & March 7th/8th ELAR Revising & Editing
 - Face to face students will test during the class period
 - Virtual students will test at home through Eduphoria Aware Online found in [Classlink](#)
 - Dates TBA by your student's teachers (check [Canvas](#) calendars for each course)
 - These are best when completed in one sitting.
- PMAs will gauge student progress on standards covered by that point in the year.
- Must be done on a laptop, desktop computer, or iPad (no phones).
- Students will access the Eduphoria Aware App through [Classlink](#).
 - Log in is the same as Classlink ***without student initials***
 - Ex. Classlink log in: ao123456 Eduphoria log in: 123456
 - The password is the same used for Classlink
 - Student directions can be found [HERE](#).
- For more information about testing in LCISD visit the [Students & Parents](#) site.

A collection of colorful pencils (blue, green, purple, yellow, brown) and a watercolor palette with various colors (red, purple, yellow, green) are arranged on a white background. The pencils are on the left, and the palette is on the right.

DESIGN IT!

- T-SHIRT DESIGN CONTEST -

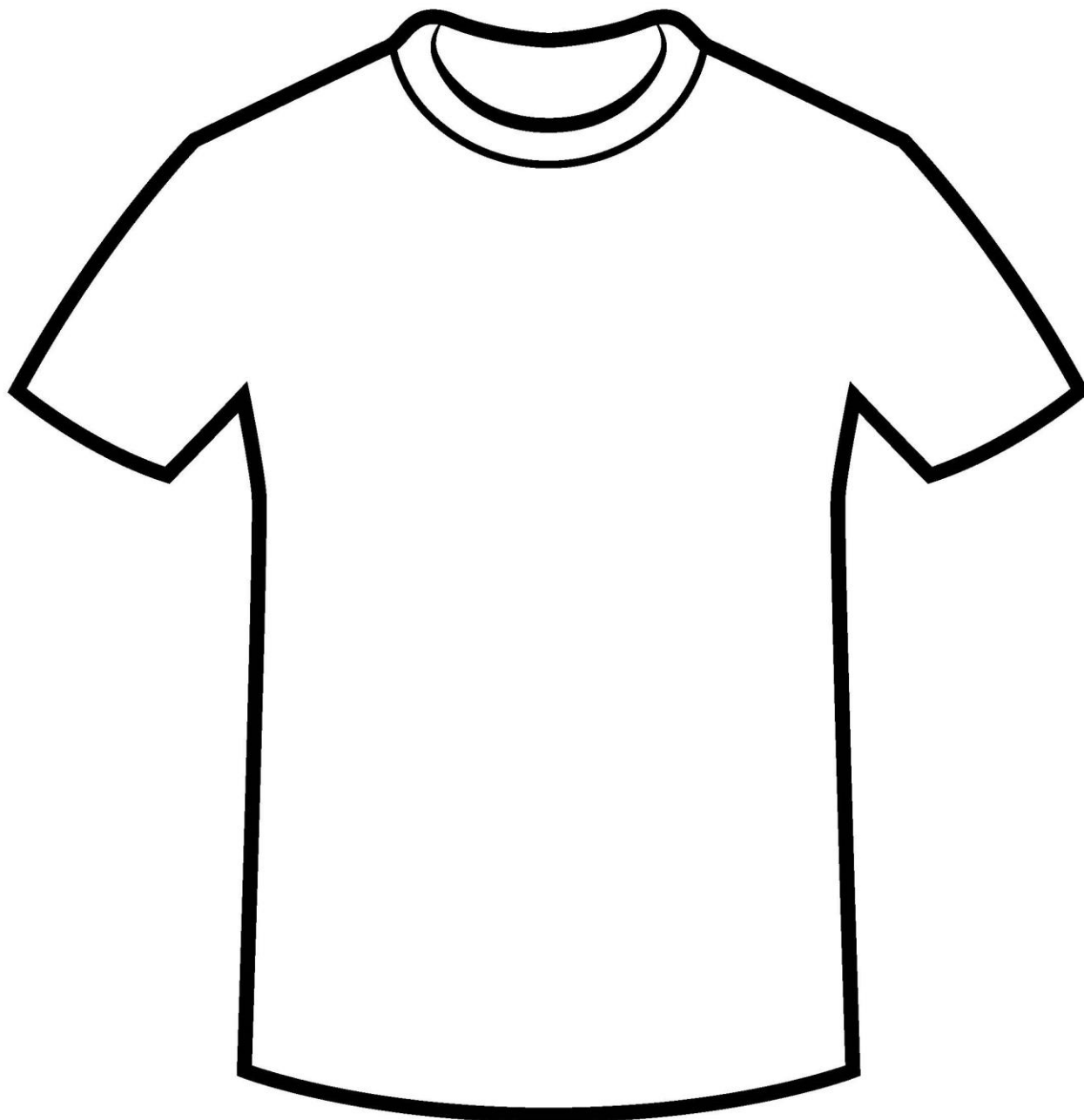
**WINNER WILL GET A FREE T-SHIRT AND
THEIR DESIGN WILL BE FEATURED ON A
SHIRT!**



SPONSORED BY LEAMAN JR. HIGH PTO

Student name: _____

Grade: ____



***Please sketch your T-shirt concept above.
Winning design will be transformed into a screen-printable
design, with input from the winning artist. All entries must
be turned in by January 20!***



The Counselor's Corner



Character Trait for January / February

FAIRNESS

Take turns and share | Be open-minded | Treat all people fairly

What does Fairness mean?

- Play by the rules
- Take turns and share
- Be open-minded; listen to others
- Don't take advantage of others
- Don't blame others carelessly
- Treat all people fairly

TIPS for Students:



Treat others fairly regardless of your differences.

Character Building at Home:

How Parents Can Promote Fairness:

- Create a family environment that provides opportunities for each family member to express participates in decisions.
- Embrace the uniqueness of each family member, avoiding comparisons with siblings and friends.
- Clearly state and consistently apply rules and procedures.
- Teach open-minded as well as consistency.
- Talk frequently about fairness and fair play.
- Treat others, both inside and outside the family, equitably.

Affirmations

Practice affirmations daily! Please encourage your students to say positive affirmations everyday!

Examples: I am Smart, I am Kind, I am Awesome.....

7th and 8th Grade Counselors

Anita Oliphant- 7th Grade

Contact information: Anita.oliphant@lcisd.org
832-223-5209

Office Hours M-F 7:15-3:15

Latoya Session— 8th Grade

Contact information: lsession@lcisd.org
832-223-5269

Office Hours M-F 8:15-4:00

Dean Leaman Junior High School

BE THE ONE

Leaman Junior High

Who is going the extra mile for you?

- Think for a moment about the amazing staff at Leaman. Who is working hard for students? Nominate a teacher or staff member that you would like to recognize for their hard work in the [Be the One survey](#). If you agree, we will post the shout out on Facebook to share what a great a place Leaman is. You can fill this survey out for as many staff members as you'd like.
- Each Monday the results will be gathered. They will then be shared with staff members during Tuesday department meetings or Wednesday staff meetings.

♥Thanks for sharing the love ♥

**Texas Education Agency
2019-20 School Report Card
DEAN LEAMAN J H SCHOOL (079901045)**

Accountability Rating

All Districts and Schools Were Not Rated in 2020 Due to COVID-19

**Not
Rated**

Given the impact of COVID-19, all districts and schools received a label of Not Rated: Declared State of Disaster for their 2020 accountability ratings.

[Click here to read the official announcement.](#)

School Information

District Name: LAMAR CISD
Campus Type: Middle School
Total Students: 1,333
Grade Span: 06 - 08

For more information about this campus, see <https://TXSchools.gov> or the Texas Academic Performance Report at <https://rptsvr1.tea.texas.gov/perfreport/tapr/2020/index.html>

Distinction Designations

Distinction designations were not awarded in 2020.

School and Student Information

This section provides demographic information about DEAN LEAMAN J H SCHOOL, including attendance rates; enrollment percentages for various student groups; student mobility rates; and class size averages at the campus, district, and state level, where applicable.

	Campus	District	State
Attendance Rate (2018-19)	97.0%	95.4%	95.4%
Enrollment by Race/Ethnicity			
African American	17.5%	19.8%	12.6%
Hispanic	25.5%	42.9%	52.8%
White	44.7%	26.9%	27.0%
American Indian	0.3%	0.3%	0.4%
Asian	8.0%	6.9%	4.6%
Pacific Islander	0.2%	0.2%	0.2%
Two or More Races	3.9%	3.0%	2.5%
Enrollment by Student Group			
Economically Disadvantaged	20.8%	45.6%	60.2%
Special Education	10.3%	12.8%	10.7%
English Learners	7.8%	15.0%	20.3%
Mobility Rate (2018-19)	7.4%	13.2%	15.3%

	Campus	District	State
Class Size Averages by Grade or Subject			
Elementary			
Grade 6	19.9	19.8	20.4
Secondary			
English/Language Arts	20.6	19.3	16.4
Foreign Languages	21.0	22.5	18.7
Mathematics	21.3	20.5	17.8
Science	24.7	21.5	18.8
Social Studies	22.8	21.6	19.3

School Financial Information (2018-19)

Various financial indicators based on actual data from the prior year are reported for the campus, district, and state. For more information, see <http://tea.texas.gov/financialstandardreports/>.

	Campus	District	State
Instructional Staff Percent	n/a	67.4%	64.6%
Instructional Expenditure Ratio	n/a	66.7%	62.8%

	Campus	District	State
Expenditures per Student			
Total Operating Expenditures	\$6,918	\$9,686	\$9,913
Instruction	\$4,935	\$5,910	\$5,558
Instructional Leadership	\$39	\$86	\$162
School Leadership	\$543	\$530	\$589

Texas Education Agency
2019-20 School Report Card
DEAN LEAMAN J H SCHOOL (079901045)

STAAR Outcomes

This section provides STAAR performance and Academic Growth outcomes. Academic Growth measures whether students are maintaining performance or improving from year to year. Please note that due to the cancellation of spring 2020 State of Texas Assessments of Academic Readiness (STAAR) due to the COVID-19 pandemic, the performance of this year's report is not updated.

		State	District	Campus	African American	Hispanic	White	American Indian	Asian	Pacific Islander	Two or More Races	Econ Disadv
STAAR Performance Rates at Approaches Grade Level or Above (All Grades Tested)												
All Subjects	2019	78%	85%	90%	89%	86%	91%	92%	96%	*	93%	84%
	2018	77%	84%	91%	85%	89%	93%	67%	97%	-	92%	84%
ELA/Reading	2019	75%	83%	90%	90%	84%	91%	*	94%	*	92%	82%
	2018	74%	82%	90%	83%	89%	93%	*	95%	-	97%	83%
Mathematics	2019	82%	88%	93%	92%	91%	93%	*	98%	*	97%	89%
	2018	81%	87%	94%	90%	94%	94%	*	99%	-	97%	88%
Writing	2019	68%	77%	85%	86%	83%	83%	*	93%	-	100%	85%
	2018	66%	74%	88%	86%	80%	90%	*	96%	-	89%	78%
Science	2019	81%	87%	90%	84%	84%	94%	*	100%	-	90%	81%
	2018	80%	86%	93%	87%	90%	96%	*	100%	-	78%	88%
Social Studies	2019	81%	85%	87%	84%	80%	90%	*	97%	-	80%	78%
	2018	78%	84%	86%	74%	85%	91%	*	92%	-	78%	74%
STAAR Performance Rates at Meets Grade Level or Above (All Grades Tested)												
All Subjects	2019	50%	60%	66%	57%	58%	70%	77%	82%	*	65%	53%
	2018	48%	58%	68%	57%	60%	73%	58%	81%	-	80%	53%
ELA/Reading	2019	48%	58%	65%	58%	57%	69%	*	79%	*	62%	51%
	2018	46%	56%	67%	57%	61%	71%	*	82%	-	79%	51%
Mathematics	2019	52%	64%	70%	59%	63%	74%	*	86%	*	68%	57%
	2018	50%	61%	73%	65%	65%	76%	*	91%	-	86%	61%
Writing	2019	38%	48%	64%	55%	62%	64%	*	83%	-	73%	58%
	2018	41%	51%	68%	57%	57%	73%	*	75%	-	89%	52%
Science	2019	54%	64%	65%	53%	53%	71%	*	84%	-	70%	46%
	2018	51%	61%	66%	40%	60%	78%	*	67%	-	67%	49%
Social Studies	2019	55%	63%	59%	52%	48%	65%	*	71%	-	50%	47%
	2018	53%	62%	57%	46%	45%	65%	*	64%	-	67%	40%
STAAR Performance Rates at Masters Grade Level (All Grades Tested)												
All Subjects	2019	24%	32%	37%	32%	30%	40%	54%	50%	*	41%	26%
	2018	22%	29%	37%	24%	29%	42%	25%	51%	-	49%	26%
ELA/Reading	2019	21%	29%	41%	37%	34%	44%	*	54%	*	43%	30%
	2018	19%	27%	42%	29%	33%	47%	*	53%	-	59%	26%
Mathematics	2019	26%	36%	35%	28%	27%	38%	*	52%	*	38%	23%
	2018	24%	32%	38%	25%	33%	40%	*	60%	-	45%	26%
Writing	2019	14%	21%	36%	28%	32%	34%	*	63%	-	55%	18%
	2018	13%	18%	25%	16%	18%	31%	*	21%	-	56%	22%
Science	2019	25%	32%	33%	25%	21%	40%	*	32%	-	40%	22%
	2018	23%	30%	36%	15%	20%	47%	*	63%	-	33%	23%
Social Studies	2019	33%	41%	40%	39%	32%	44%	*	42%	-	30%	35%
	2018	31%	38%	34%	22%	27%	41%	*	40%	-	44%	30%
Academic Growth Score (All Grades Tested)												
Both Subjects	2019	69	72	69	67	66	70	63	77	*	68	65
	2018	69	72	72	65	71	73	75	80	-	78	68
ELA/Reading	2019	68	71	68	68	65	69	*	80	*	64	63
	2018	69	72	71	63	70	73	*	79	-	77	68
Mathematics	2019	70	73	70	66	66	71	*	75	*	72	68
	2018	70	71	72	67	71	72	*	82	-	79	68

? Indicates that the data for this item were statistically improbable or were reported outside a reasonable range.
- Indicates zero observations reported for this group.
* Indicates results are masked due to small numbers to protect student confidentiality.
n/a Indicates data reporting is not applicable for this group.

Texas Education Agency
2019-20 School Report Card
DEAN LEAMAN J H SCHOOL (079901045)

Prior-Year Non-Proficient and Student Success Initiative STAAR Outcomes

Progress of Prior-Year Non-Proficient Students shows STAAR performance rates for students who did not perform satisfactorily in 2017-18 but did in 2018-19. Student Success Initiative shows rates related to the requirement for students to demonstrate proficiency on the reading and mathematics STAAR in grades 5 and 8. Please note that due to the cancellation of spring 2020 State of Texas Assessments of Academic Readiness (STAAR) due to the COVID-19 pandemic, this year's report is not updated.

	State	District	Campus	African American	Hispanic	White	American Indian	Asian	Pacific Islander	Two or More Races	Econ Disadv
Progress of Prior-Year Non-Proficient Students											
Sum of Grades 4-8											
Reading											
2019	41%	45%	47%	62%	41%	42%	-	60%	-	*	46%
2018	38%	44%	42%	*	57%	39%	*	*	-	*	32%
Mathematics											
2019	45%	49%	49%	64%	35%	48%	-	-	-	*	50%
2018	47%	45%	44%	*	55%	44%	*	-	-	*	*
Students Success Initiative											
Grade 8 Reading											
Students Meeting Approaches Grade Level on First STAAR Administration											
2019	78%	84%	91%	88%	85%	95%	*	97%	-	91%	85%
Students Requiring Accelerated Instruction											
2019	22%	16%	9%	13%	15%	5%	0%	3%	-	9%	15%
STAAR Cumulative Met Standard											
2019	85%	89%	97%	95%	93%	98%	*	100%	-	100%	95%
Grade 8 Mathematics											
Students Meeting Approaches Grade Level on First STAAR Administration											
2019	82%	87%	95%	93%	95%	93%	-	100%	-	100%	91%
Students Requiring Accelerated Instruction											
2019	18%	13%	5%	7%	5%	7%	-	0%	-	0%	9%
STAAR Cumulative Met Standard											
2019	88%	91%	98%	99%	98%	98%	-	100%	-	100%	96%

? Indicates that the data for this item were statistically improbable or were reported outside a reasonable range.
- Indicates zero observations reported for this group.
* Indicates results are masked due to small numbers to protect student confidentiality.
n/a Indicates data reporting is not applicable for this group.

Important Updates from Nurse Boddie



If a student is waiting for COVID test results - please keep student home, until results are received.

Do not send students to school, who are waiting on COVID test results.

ALL students must bring two (2) masks to school.

Students must be wearing one mask, as they enter school or bus.

And keep a second in their backpack, incase the 1st one breaks, lost or otherwise misplaced.

Masks are worn, covering Mouth AND Nose

Contact Nurse Boddie with any questions kboddie@lcsd.org

MATH TUTORING CLASSES

by NHS Fulshear Students

JOIN US VIA ZOOM

<https://lcsd.zoom.us/j/84041703875>

Every Wednesday
Math Tutoring
4:30pm to 5:30pm

Welcome to Leaman!

Welcome to Leaman!

Frequently Asked Questions

Attendance

Excuses for absences must be submitted within 10 days of the absence. These can be e-mailed, faxed, or dropped off in the attendance office.

Michelle O'Brien
april.obrien@lcisd.org
Fax: (832) 223-5201

Behavior Expectations

Students follow the P.R.I.D.E. matrix for expected behaviors.

The LCISD student code of conduct can be found in the LCISD Secondary handbook at All P.E. and Dance students must dress out every day. P.E. uniforms are available for purchase from the coaches for \$25.00 (shirt and shorts). Lockers are available to store items in the dressing rooms.

Extracurricular/Clubs

Leaman has a variety of fun organizations. Check out our website for more information at this link:
http://www.lcisd.org/campuses/leaman_j_h/extracurricular

Homework

Each teacher's Canvas page will include homework information for their course.

Uniform/Dress Code

Leaman Junior High follows the dress code policy in the LCISD Secondary handbook at this link: <http://www.lcisd.org/students-parents/general-information>

When a student is out of dress code, he or she will be required to change.

Birthdays

Gifts, cakes, cupcakes, balloons, treat bags, and flowers are not to be sent to school. Invitations to individual parties are not to be distributed at school, during class time.

Lockers

Lockers are optional. There is a mass check out at the beginning of each year. At any other time, if your student wants a locker, they will contact Jennifer Leslie
jleslie@lcisd.org

Transportation changes

Submit all changes by 3:00 each day. Students cannot ride the bus home with other students due to limited seating.

Lunchtime

A parent can only provide lunch for his/her child. Students are not allowed to pop popcorn for lunch.

Drinks must be in a clear see-through bottle.

Communication

A weekly newsletter will be sent out each Friday. This newsletter contains important information about our upcoming events and current programs.

You will receive a phone reminder about this e-mail each Friday as well.

Cell Phones

Students can only use their phones when permitted by a staff member. If a phone is taken, there will be a \$15.00 fee.

Textbooks

Consumable workbooks and textbooks will be provided in the classroom.

Textbooks (for home usage) can be checked out from Jennifer Leslie
jleslie@lcisd.org
(if available)

Conferences

To set up a conference with a teacher, counselor, or principal please contact them directly via mail or phone.