



LAMARCISD

A PROUD TRADITION | A BRIGHT FUTURE

Gray Elementary Attendance Boundary Options

Presented to the Gray
Attendance Boundary Committee
January 12, 2023

Welcome



Introductions

- For Committee Members:
 - Name
 - School
 - Children (grades/schools)
 - How long have you lived in the community?
- For Staff Members:
 - Name
 - Position



Adriane Gray - Opening Fall of 2023



Lamar CISD Zoning Process

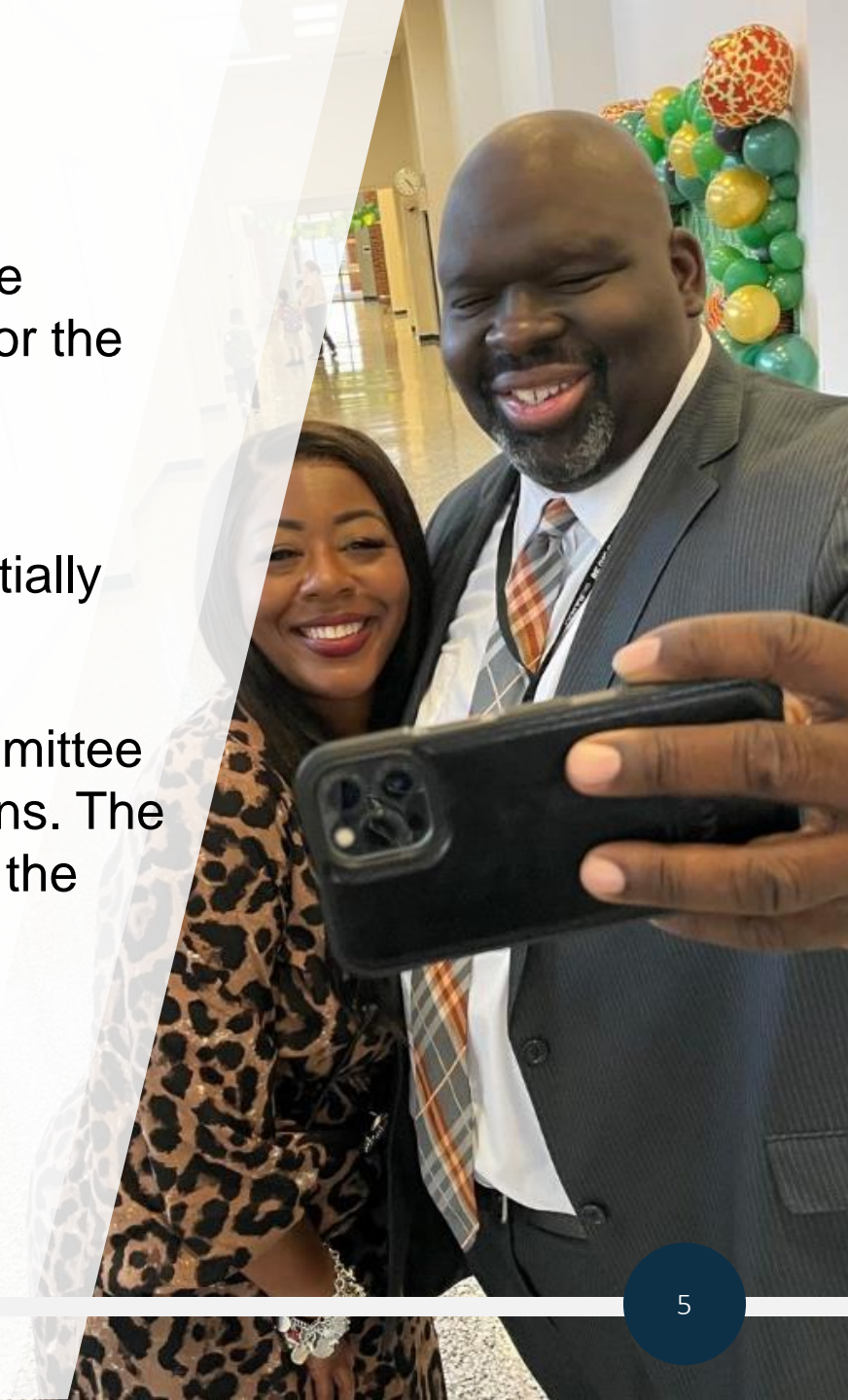
Step 1: The district demographers (PASA) develop at least three options for consideration which the Board will vet and approve for the Attendance Boundary Committee (ABC) to review and provide feedback on.

Step 2: The district will open a survey targeting the areas potentially impacted by rezoning.

Step 3: The District will establish an Attendance Boundary Committee (ABC) to review and consider survey results and the three options. The committee will rank the options and make a recommendation to the Board of Trustees.

Step 4: Administration will present the rankings and a recommendation to the Board for possible approval.

Step 5: Board selects and approves zoning plans.



Lamar CISD Zoning Timeline

- **October 10** Cabinet Reviewed Current Options
- **November 9** Presented Options to Impacted Principals
- **November 15** Board – Future Action Item re: Process & Options
- **Nov. 28 – Dec. 6** ABC Selection & Notification
- **December 13** Board – Action Item to Determine Options for ABC & Approve Committee
- **Dec. 15 – Jan. 6** Survey
- **January 10** ABC Meeting 1
- **January 12** ABC Meeting 2
- **January 17** Board – Action Item



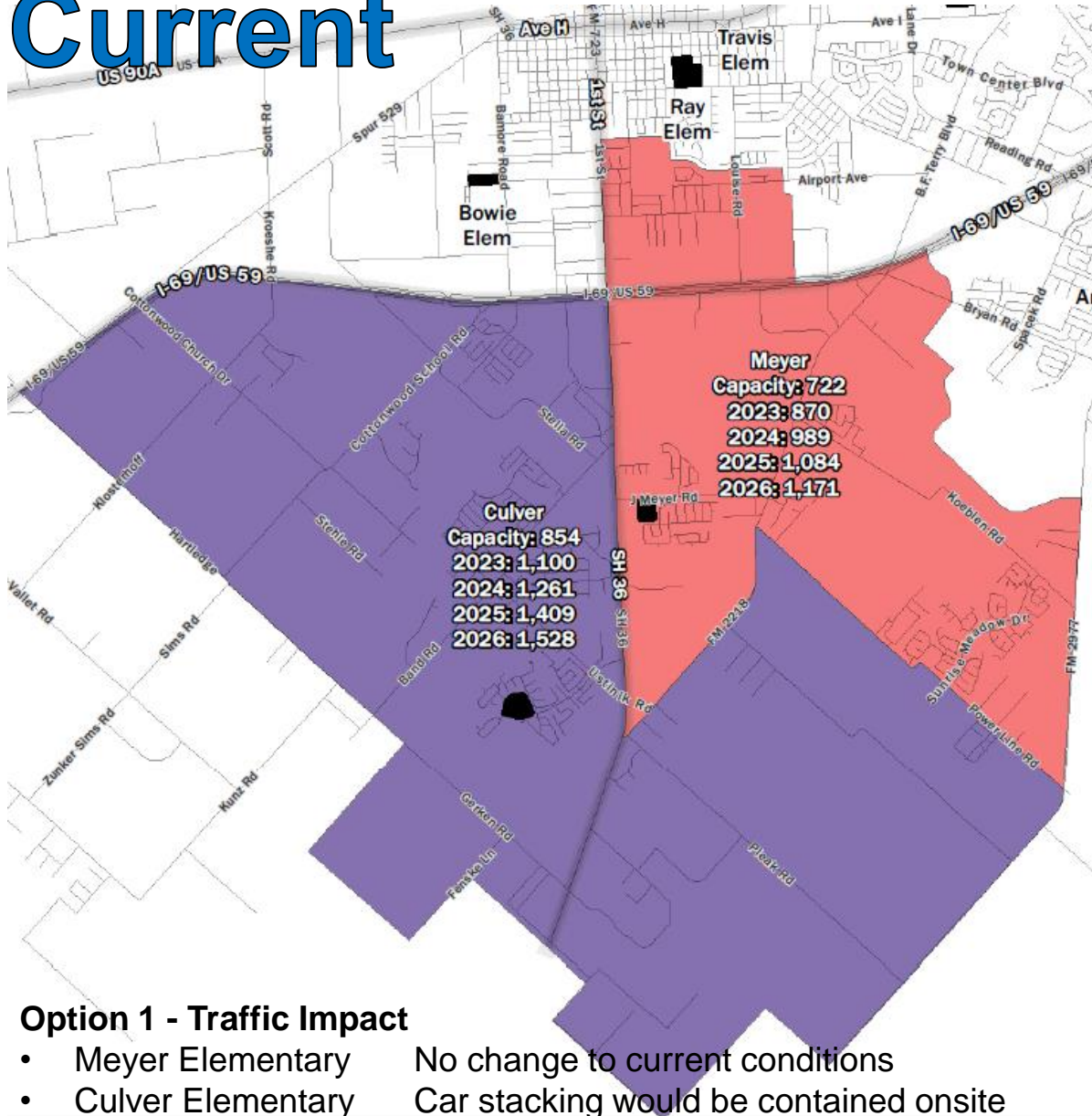
Role of the ABC

- The Attendance Boundary Committee will provide community and parent involvement in redrawing attendance boundaries to accommodate new growth or shifts in its student population.
- Membership of the ABC will consist of at least two representatives from each potentially impacted campus.
- The campus administrator will select campus representatives.
- If the ABC creates an additional option, Administration will send an information item to the impacted campuses.
- In addition, we will hold a Public Hearing at the January meeting prior to presenting the committee's ranking of the options.

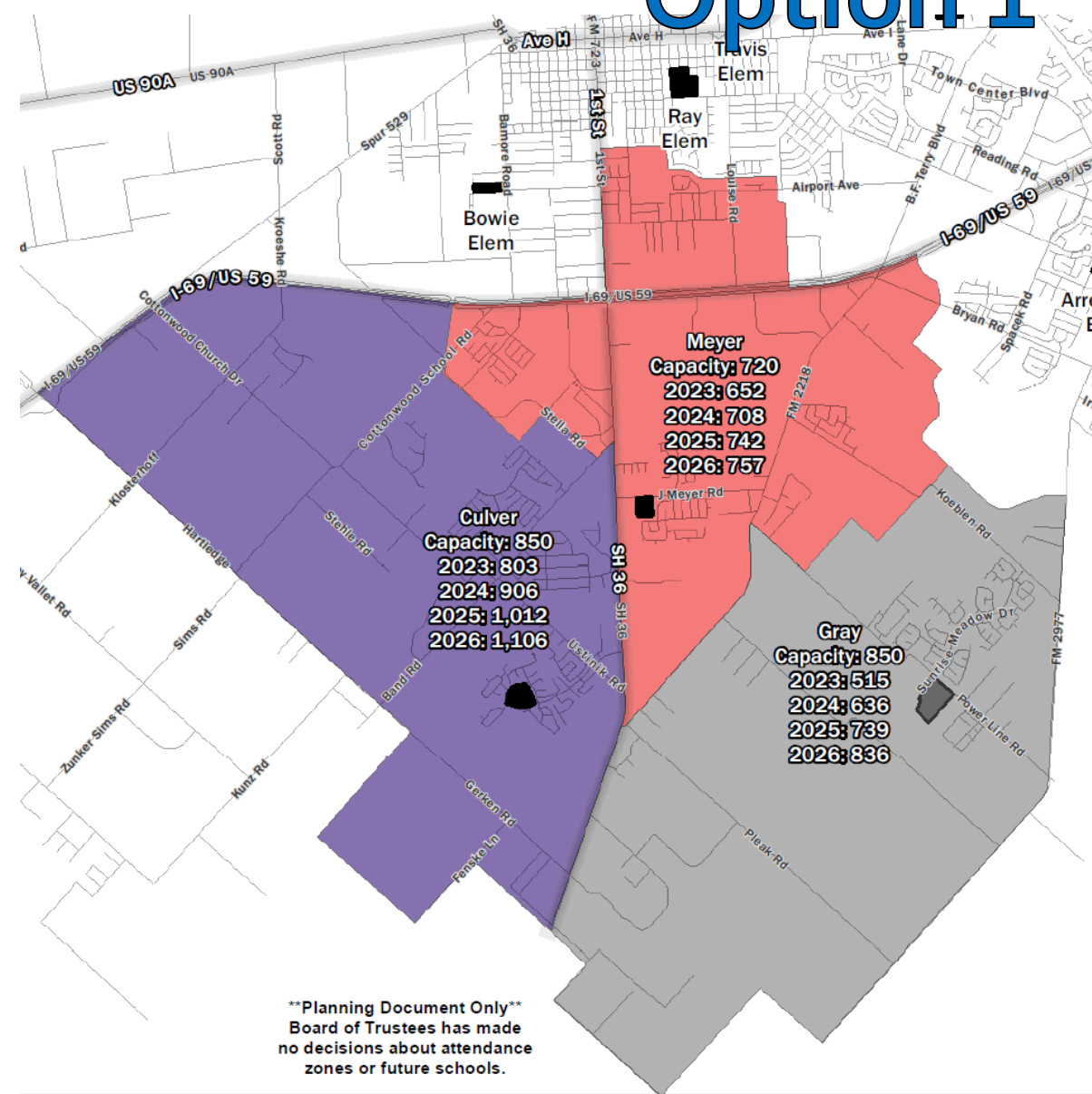
Objectives/Criteria

- To develop a fair and objective rezoning process.
- To always keep in mind doing what is in the best interest of students.
- To draw attendance zones in a way that supports an efficient/effective use of school facilities.
- To align the number of students (enrollment) with campus capacity.
- To reduce overcrowding of campuses.
- To plan for future growth.
- To keep neighborhoods and feeder schools tracking together, as much as possible.
- To minimize rezoning neighborhoods which have been affected in previous rezonings.
- To draw secondary zones which reflect the diversity of the district, as much as possible.
- To consider elementary students' proximity to a campus, being mindful of traffic patterns that allow for the safest routes available.
- To communicate zoning information effectively to all students and families who may be impacted.

Current



Option 1



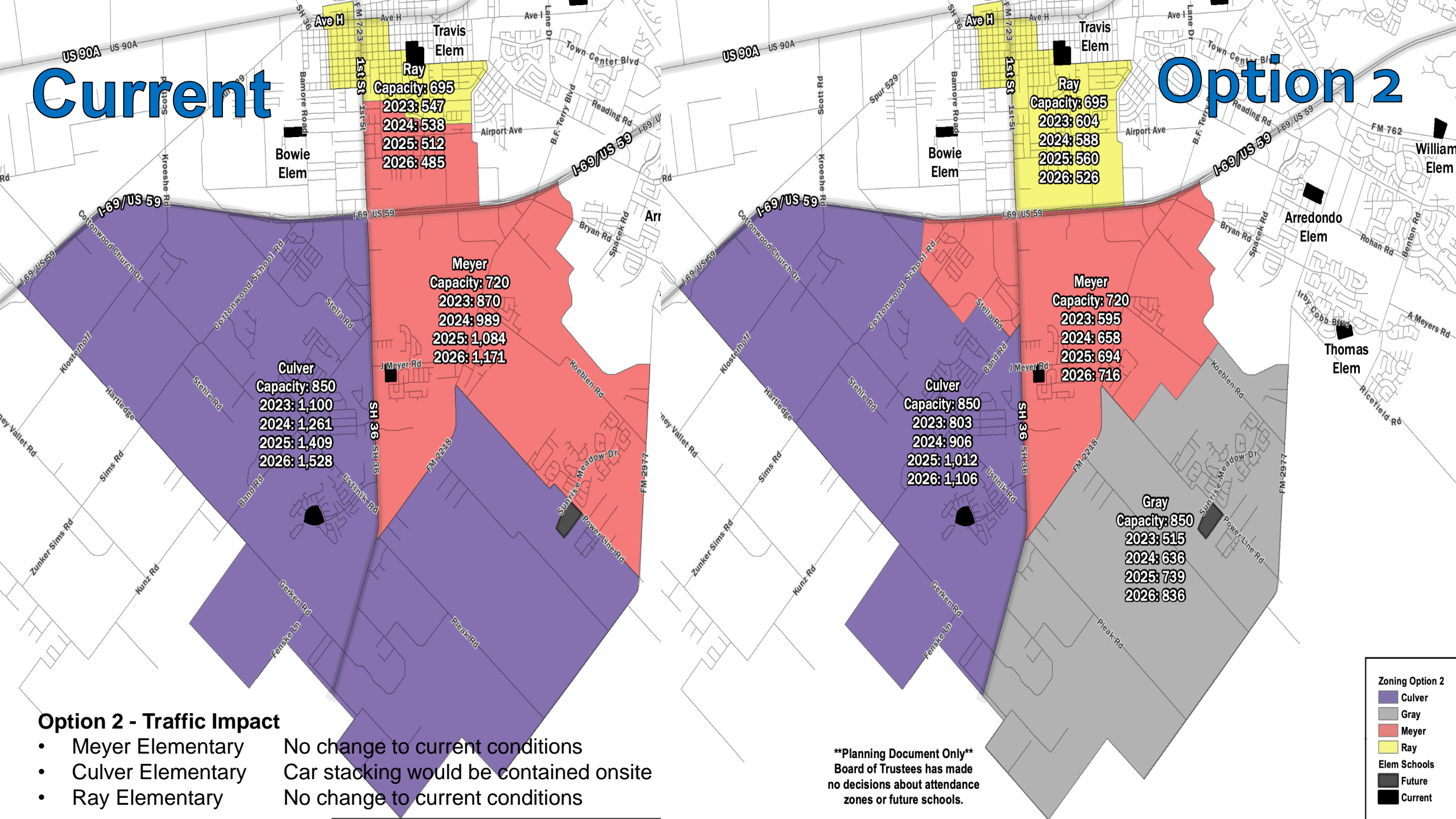
Option 1 - Traffic Impact

- Meyer Elementary No change to current conditions
- Culver Elementary Car stacking would be contained onsite

Planning Document Only
Board of Trustees has made no decisions about attendance zones or future schools.

Current

Option 2



Option 2 - Traffic Impact

- Meyer Elementary No change to current conditions
- Culver Elementary Car stacking would be contained onsite
- Ray Elementary No change to current conditions

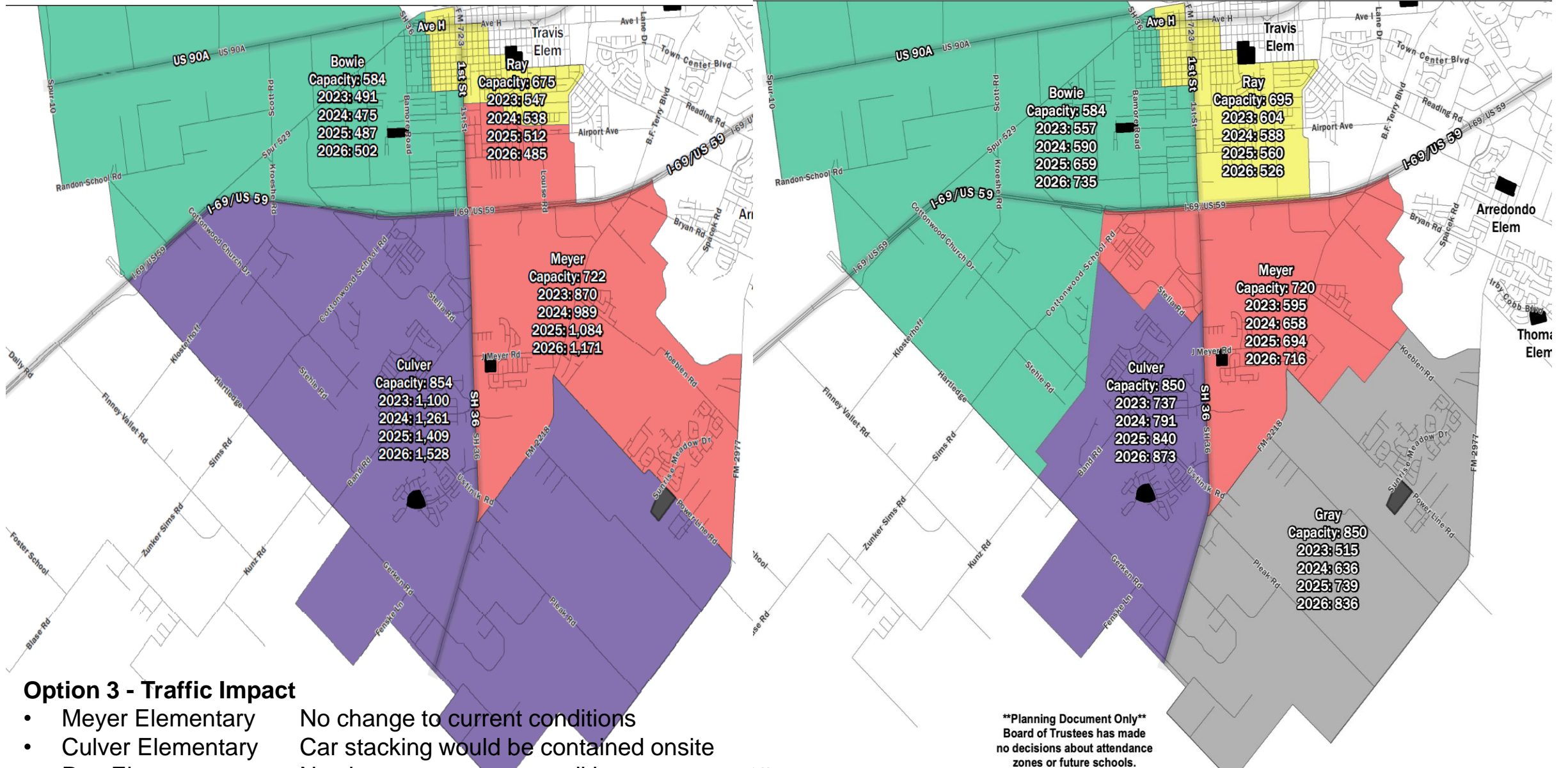
****Planning Document Only****
 Board of Trustees has made no decisions about attendance zones or future schools.

Zoning Option 2

- Culver
- Gray
- Meyer
- Ray
- Elem Schools
- Future
- Current

Current

Option 3



Option 3 - Traffic Impact

- Meyer Elementary No change to current conditions
- Culver Elementary Car stacking would be contained onsite
- Ray Elementary No change to current conditions
- Travis Elementary Minimal impact on the district road network

****Planning Document Only****
 Board of Trustees has made no decisions about attendance zones or future schools.

Survey Results

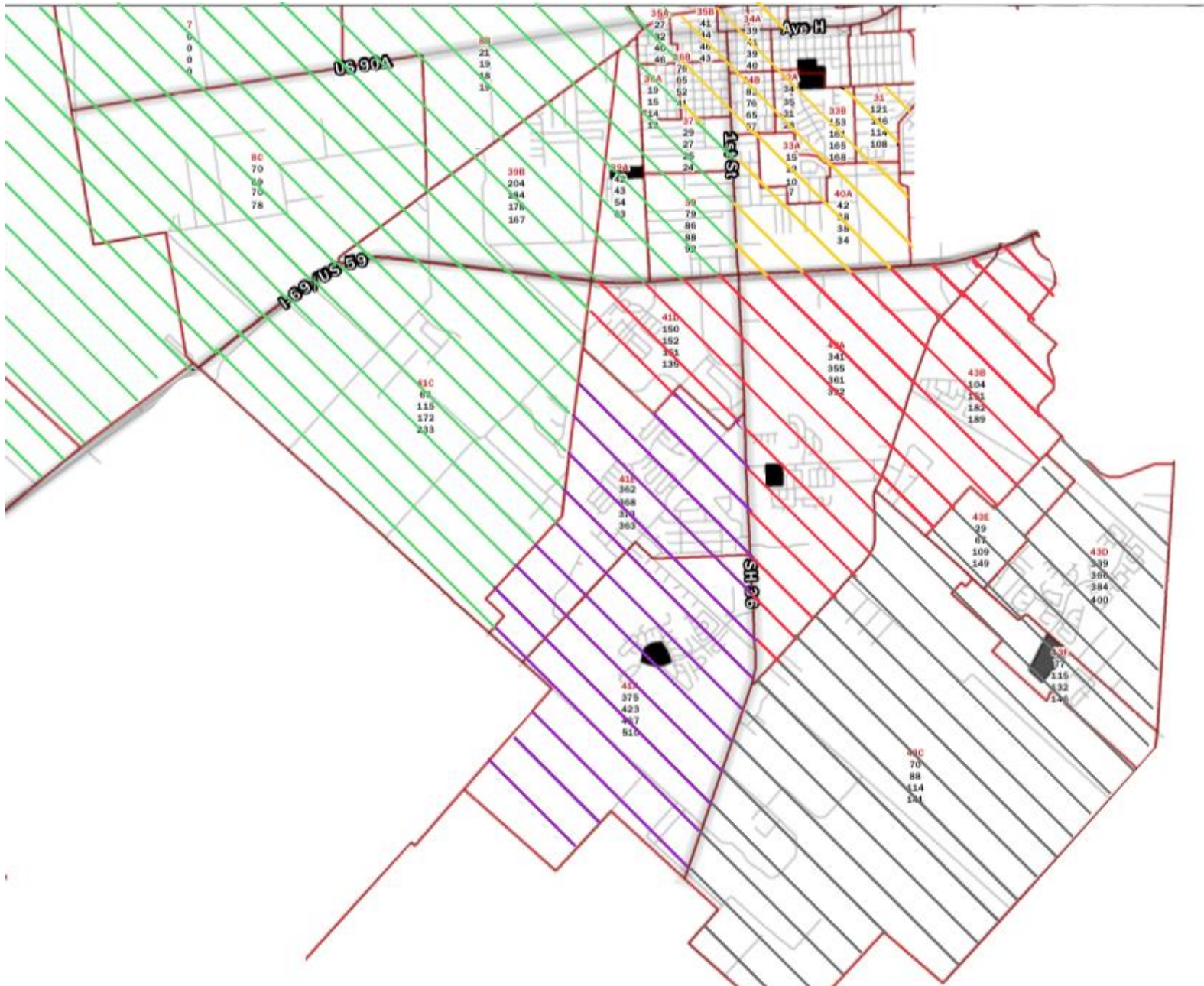
- **Sent to 3,436 e-mail addresses**
 - Send via direct e-mail
 - Placed in campus newsletters
 - Backpack flyers
 - Campus Social Media
 - District Web site
- **Received 535 responses**
 - Bowie – 62
 - Culver – 202
 - Meyer – 185
 - Ray – 86

Survey Results

		Strongly Disagree	Disagree	Neither Agree nor Disagree	Agree	Strongly Agree	Total
(a)	Option 1 better balances enrollment across schools.	145 23%	136 22%	153 25%	100 16%	88 14%	622
(b)	Option 2 better balances enrollment across schools.	104 17%	133 22%	176 29%	127 21%	77 12%	617
(c)	Option 3 better balances enrollment across schools.	106 17%	74 12%	130 21%	135 22%	178 29%	623

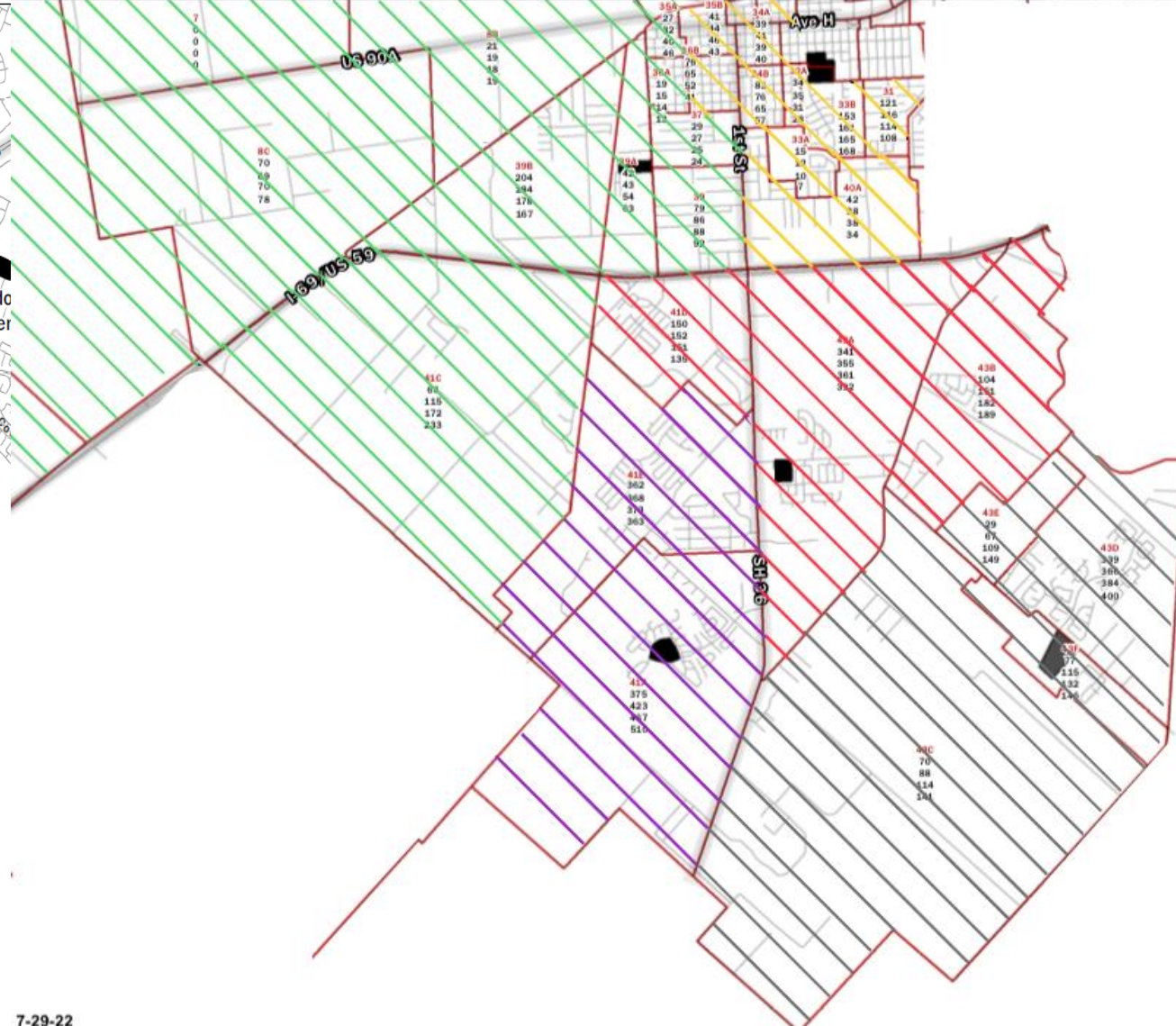
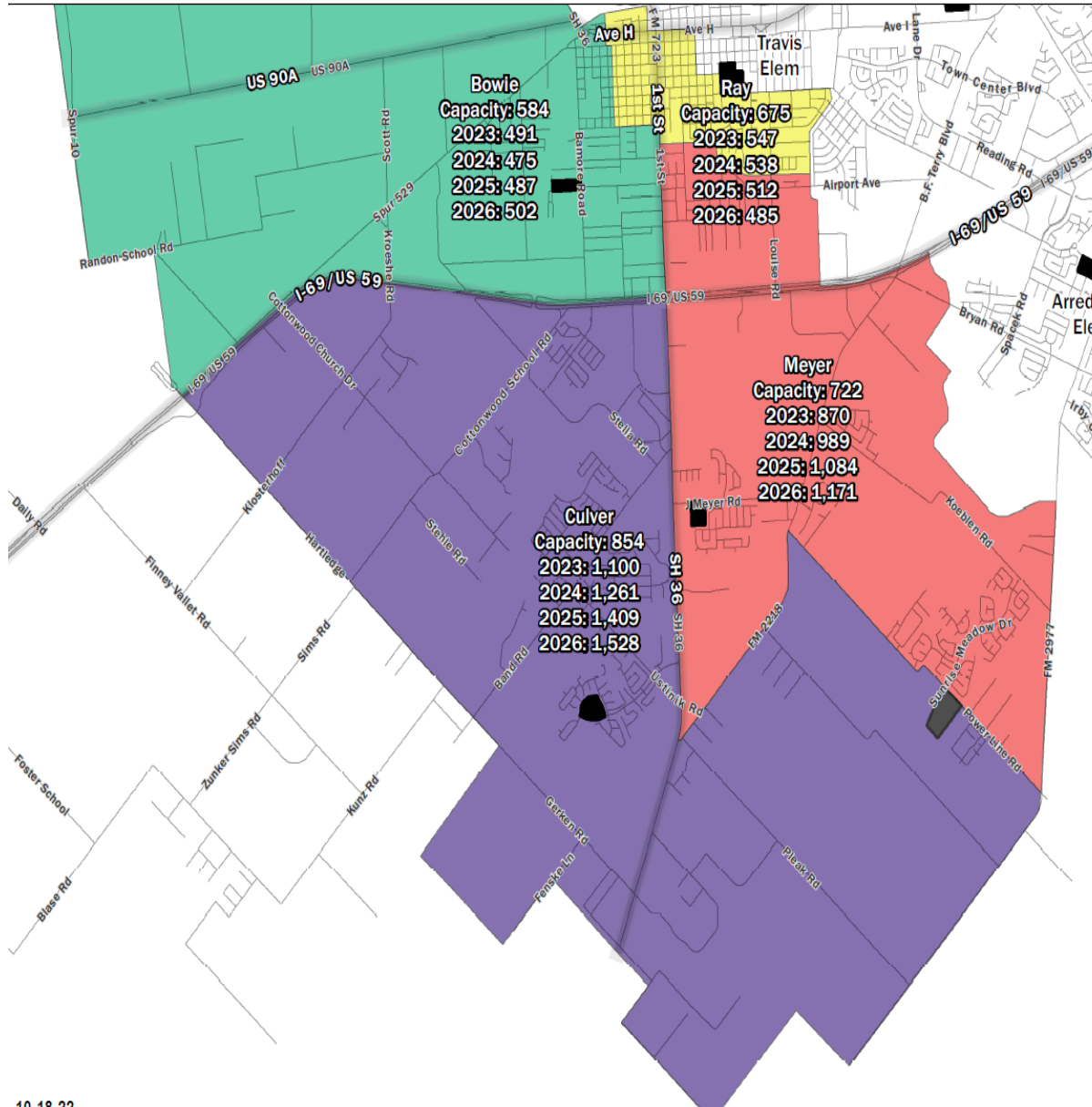
Responses	Count	%
I prefer Zone Option 1.	172	29%
I prefer Zone Option 2.	126	21%
I prefer Zone Option 3.	304	50%

Option 3 – with planning zones



Current

Option 3



7-29-22

Developing Option 4

Let's work this out!

Ranking the Options – Round 1

- Each committee member will receive 1 colored dot
- You will place your dot on your top choice (first preference)
- Committee will discuss the outcome and what it likes/doesn't like about each option

Ranking the Options – Round 2

- Each committee member will receive another colored dot
- You will place your dot on your top choice (first preference)
- This will determine the final ranking

Next steps

- Discuss Grandfathering parameters
- Select a spokesperson
- Present options and ranking to the Board of Trustees

**Board meeting:
January 17, 2023
6:30 PM**



Contact Info

Info@LCISD.org

832.223.0330

